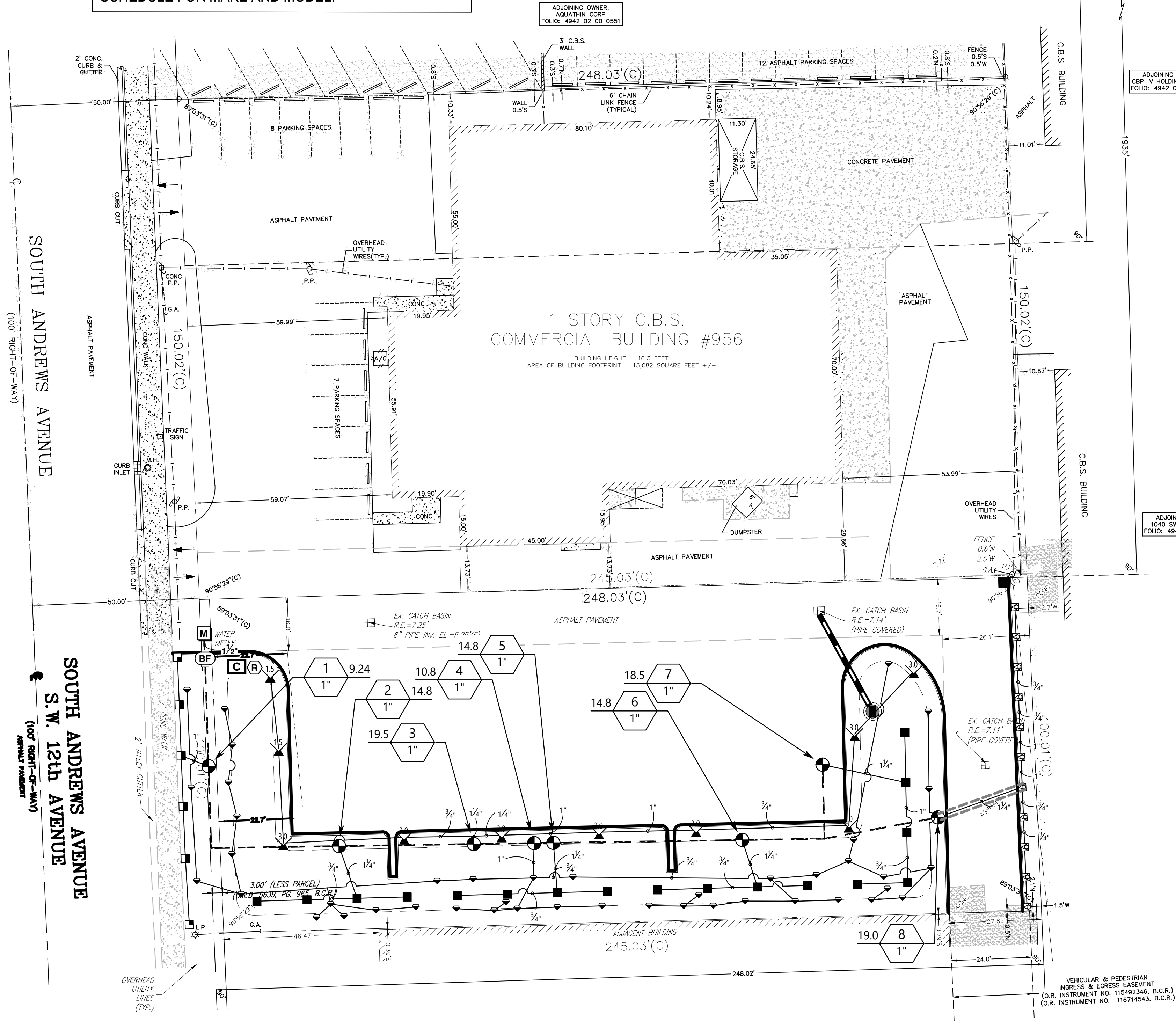


IRRIGATION FOR EXISTING BUILDING TO BE INSPECTED AND REPAIRED, IF NECESSARY, BY IRRIGATION CONTRACTOR. SYSTEM SHOULD BE IN GOOD WORKING ORDER AND PROVIDE REQUIRED COVERAGE. ADD BUBBLERS AT NEW TREE LOCATIONS AS REQUIRED BY CODE. SEE IRRIGATION SCHEDULE FOR MAKE AND MODEL.

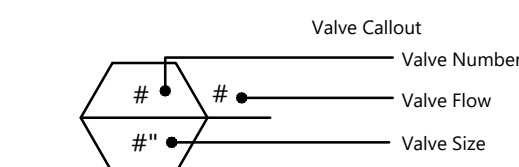


IRRIGATION SYSTEM TO PROVIDE 100% COVERAGE WITH 50% OVERLAP.

PLEASE REFER TO SHEET IR.02 FOR IRRIGATION DETAILS AND NOTES

IRRIGATION SCHEDULE

SYMBOL	MANUFACTURER/MODEL/DESCRIPTION	QTY	PSI	GPM	RADIUS
	Rain Bird 1806-PRS 15 Strip Series Turf Spray 6" pop-up with pressure regulator.	11	30		
	Rain Bird 1806-PRS 15 Series MPR Turf Spray 6" pop-up with pressure regulator.	23	30		
	Rain Bird 1802-1400 Flood Flood Bubbler 2in. pop-up, install w/ PA-80 adapter.	43	40		
SYMBOL	MANUFACTURER/MODEL/DESCRIPTION	QTY	PSI	GPM	RADIUS
	Rain Bird 3500-S 1.5 Shrub Rotor, adjustable and full circle	2	25	1.06	23'
	Rain Bird 3500-S 3.0 Shrub Rotor, adjustable and full circle	8	25	2.17	29'
SYMBOL	MANUFACTURER/MODEL/DESCRIPTION	QTY			
	Rain Bird PESB-PRS-D 1" 1in., 1-1/2in., 2in., 3in., 3in. Plastic Industrial Remote Control Valve. Low Flow Operating Capability, Globe Configuration, With Pressure Regulating Module, and Scrubber Technology for Reliable Performance in Dirty Water Irrigation Applications.	8			
	Febco 765 1" Pressure Vacuum Breaker, brass with ball valve SOV. Install 12in. 1 above highest downstream outlet and the highest point in the downstream piping.	1			
	Rain Bird ESPLXME2P-LXMM-LXMPED 12 Station, Traditionally-Wired Commercial Controller w/ Factory Installed PRO Smart Module. Indoor/Outdoor, Plastic Wall-Mount Enclosure. Install in LXMM-LXMPED Powder Coated, Metal Wall-Mounted Cabinet w/ Pedestal.	1			
	Rain Bird RSD-BEX Rain Sensor, with metal latching bracket, extension wire.	1			
	Water Meter 3/4" New 3/4" Water Meter	1			
	Irrigation Lateral Line: PVC Class 160 SDR 26 1/2"	951.2 lf			
	Irrigation Lateral Line: PVC Class 160 SDR 26 3/4"	231.6 lf			
	Irrigation Lateral Line: PVC Class 160 SDR 26 1"	111.6 lf			
	Irrigation Lateral Line: PVC Class 160 SDR 26 1 1/4"	108.5 lf			
	Irrigation Mainline: PVC Class 200 SDR 21 1 1/2"	304.8 lf			
	Pipe Sleeve: PVC Schedule 80 Typical pipe sleeve for irrigation pipe. Pipe sleeve size shall allow for irrigation piping and their related couplings to easily slide through sleeving material. Extend sleeves 18 inches beyond edges of paving or construction.	26.8 lf			



VALVE SCHEDULE

NUMBER	MODEL	SIZE	TYPE	GPM	HEADS	PIPE	WIRE	DESIGN PSI	FRICTION LOSS	PSI	PSI @ POC	PRECIP
1	Rain Bird PESB-PRS-D	1"	Turf Spray	9.24	6	92.6	41.7	30	0.91	32.7	37.7	0.75 in/h
2	Rain Bird PESB-PRS-D	1"	Turf Spray	14.8	4	61.5	104.5	30	0.86	33.2	40.9	0.71 in/h
3	Rain Bird PESB-PRS-D	1"	Shrub Rotor	19.48	10	273.6	144.9	25	2.73	30.6	42.0	0.51 in/h
4	Rain Bird PESB-PRS-D	1"	Bubbler	10.75	43	654.1	182.9	40	1.94	43.8	49.7	0.87 in/h
5	Rain Bird PESB-PRS-D	1"	Turf Spray	14.8	4	60.0	168.7	30	0.84	33.2	41.2	0.71 in/h
6	Rain Bird PESB-PRS-D	1"	Turf Spray	14.8	4	59.8	225.3	30	0.84	33.2	41.5	0.71 in/h
7	Rain Bird PESB-PRS-D	1"	Turf Spray	18.5	5	85.5	272.1	30	1.26	34.0	45.6	0.74 in/h
8	Rain Bird PESB-PRS-D	1"	Turf Spray	19.03	11	115.8	284.5	30	1.09	33.9	46.0	1.9 in/h
	Common Wire						304.8					

CRITICAL ANALYSIS

Generated: 2025-07-01 11:02  
P.O.C. NUMBER: 02  
Water Source Information: New 3/4" Water Meter  
FLOW AVAILABLE  
Water Meter Size: 3/4"  
Flow Available: 22.5 GPM  
PRESSURE AVAILABLE  
Static Pressure at POC: 50 PSI  
Elevation Change: 0.00 ft  
Service Line Size: 3"  
Length of Service Line: 20 ft  
Pressure Available: 50 PSI

DESIGN ANALYSIS  
Maximum Station Flow: 19.03 GPM  
Flow Available at POC: 22.5 GPM  
Residual Flow Available: 3.47 GPM  
Critical Station: 4  
Design Pressure: 40 PSI  
Friction Loss: 1.94 PSI  
Fittings Loss: 0 PSI  
Elevation Loss: 0 PSI  
Loss through Valve: 1.88 PSI  
Pressure Req. at Critical Station: 43.8 PSI  
Loss for Fittings: 0 PSI  
Loss for Main Line: 0.42 PSI  
Loss for POC to Valve Elevation: 0 PSI  
Loss for Backflow: 3.62 PSI  
Loss for Water Meter: 1.83 PSI  
Critical Station Pressure at POC: 49.7 PSI  
Pressure Available: 50 PSI  
Residual Pressure Available: 0.31 PSI

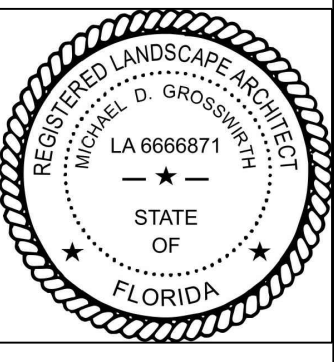
WATERING SCHEDULE

NUMBER	MODEL	TYPE	PRECIP	IN./WEEK	MIN./WEEK	GAL./WEEK	GAL./DAY
1	Rain Bird PESB-PRS-D	Turf Spray	0.75 in/h	1	80	739	
2	Rain Bird PESB-PRS-D	Turf Spray	0.71 in/h	1	85	1,258	
3	Rain Bird PESB-PRS-D	Shrub Rotor	0.51 in/h	1	119	2,318	
4	Rain Bird PESB-PRS-D	Bubbler	0.87 in/h	1	70	753	
5	Rain Bird PESB-PRS-D	Turf Spray	0.71 in/h	1	85	1,258	
6	Rain Bird PESB-PRS-D	Turf Spray	0.71 in/h	1	85	1,258	
7	Rain Bird PESB-PRS-D	Turf Spray	0.74 in/h	1	81	1,499	
8	Rain Bird PESB-PRS-D	Turf Spray	1.9 in/h	1	32	809	
	TOTALS:				637	9,691	

LOCUS MAP  
NTS.

THIS DOCUMENT, AS AN INSTRUMENT OF SERVICE, IS THE SOLE PROPERTY OF WDA DESIGN GROUP, INC. ITS USE BY THE OWNER FOR OTHER PROJECTS OR FOR COMPLETION OF THIS PROJECT BY OTHERS IS STRICTLY FORBIDDEN. DISTRIBUTION IN CONNECTION WITH THIS PROJECT SHALL NOT BE CONSTRUED AS PUBLICATION IN DEROGATION OF WDA DESIGN GROUP'S RIGHTS. ©2024, WDA DESIGN GROUP, INC.

1	XX/XX/2021	INITIAL DRC COMMENTS	MDG
A		INITIAL ISSUE	
REV.	DATE	DESCRIPTION	INIT.



PREPARED BY:

**WDA**  
**DESIGN**  
**GROUP**  
31 EAST MAIN STREET WESTBOROUGH, MA |  
508.366.6552  
WDA-DG.COM

OWNER:

**JOEFFRAN**  
**INVESTMENTS**

PREPARED FOR:

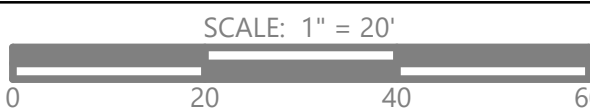
**THOMAS ENGINEERING**  
**GROUP**  
6300 NW 31ST AVE  
FORT LAUDERDALE, FL 33309  
BROWARD COUTY, FL

TITLE:

**IRRIGATION PLAN**

**980 SW 12TH AVE**  
**POMPANO BEACH, FL**

DRC



JOB NO.:	1632	DATE:	04/15/25
DWN. BY:	MDG	SHEET:	
CHK'D BY:	MDG		

**IR.01**